

The Bevel, Gardner & Associates staff:

President:

Tom Bevel

Vice President:

Ross M. Gardner

Partners:

Tom "Grif" Griffin

Craig Gravel

Jonathyn Priest

Associates:

Kim Duddy

Ken Martin

Cele Rossi

Casson Reynolds

Jeff Goudeau

Angela Fern Nelson

MAILING ADDRESS

624 NE 15th, OKC, OK 73104

CORPORATE

405-641-6126

bevelgardner@bevelgardner.com

TRAINING COORDINATOR

405-706-8489

rcgravel@bevelgardner.com

Details

Tuition:

\$725.00

Length:

Monday-Friday

Hours:

8:00 am- 5:00 pm

Location:

Locations vary, please check our course homepage for more information.

Hotel Information:

Our website lists hotel information for each class.

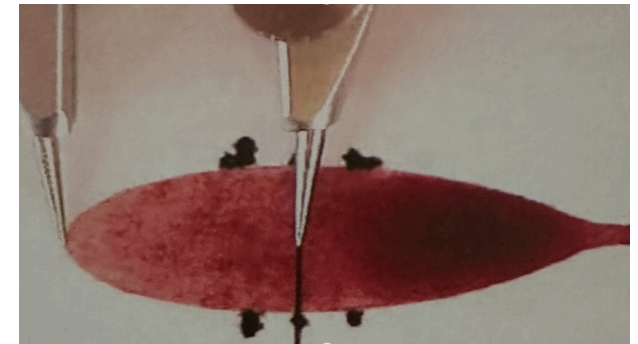
Website:

<https://bevelgardner.com/courses/bloodstain-pattern-analyst-level-ii/>

Bevel,
Gardner
& Associates Inc.

A forensic education and consulting group.

BLOODSTAIN PATTERN ANALYST LEVEL II



Tuition \$725.00

Register

ONLINE:

www.bevelgardner.com

Prerequisite

Completion of the Level I course or any Basic BPA course meeting the requirements of the IAI Bloodstain Pattern Analysis Certification Board.

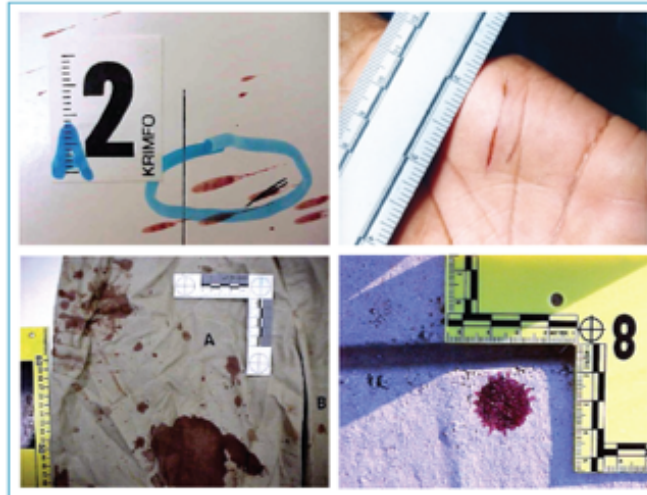
Students

Students will receive:

- Course Materials
- Lab Manual

Bring, if possible:

- Old clothing suitable for painting
- Calculator with trig. functions



This course has been approved for 40 hours of certification/recertification training credit by the IAI Crime Scene Certification Board and the IAI Bloodstain Pattern Analysis Certification Board.

Objectives

- To further the knowledge of those students who have completed a basic 40-hour course on Bloodstain Pattern Analysis.
- To review the basic course to ensure each student has a good foundation of knowledge for advancement.
- Expose the student to practical, hands-on examination of evidence, documentation, scene recording, and preparation for court testimony.



Register

ONLINE: www.bevelgardner.com